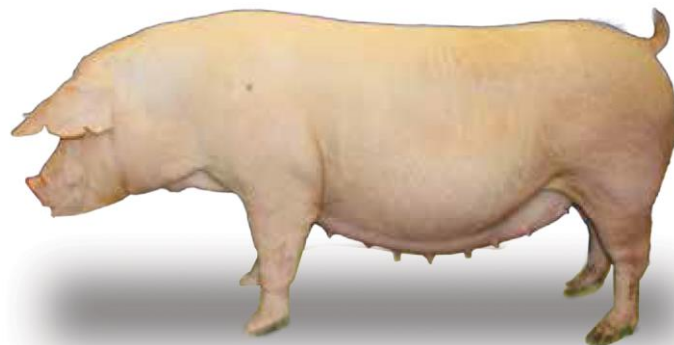




PureTek Generator

PureTek's high-intake **GENERATOR** delivers superior prolificacy and excellent mothering abilities, consistently weaning large, robust litters with an industry-leading return-to-estrus interval.



PureTek GENERATOR

Excels in fertility, longevity,
lifetime productivity

Very durable, docile animals

High-health Status, PRRS-naïve
APP- and TGE-negative

Strict biosecurity policies
with frequent testing

Guaranteed 14 functional
nipples on underline

High-intake female

Maximum maternal heterosis



PureTek's new **Commercial Generator Index (CGI)** combines data from thousands of purebred litters with data from more than 50,000 commercial litters annually, greatly increasing the accuracy of lowly heritable maternal traits.

Selected on the CGI for optimal maternal and terminal performance, the PureTek GENERATOR consistently outpaces the competition in...

- Number Born Alive
- Litter Weaning Weight
- Litter Birth Weight
- Wean-to-Estrus Interval
 - Consistent Litters
- Large Subsequent Litters
- Number Weaned

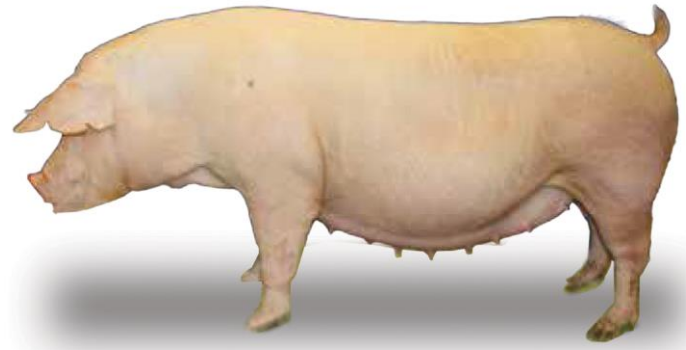
...while driving genetic progress in terminal traits...

- Efficient Lean Growth
 - Backfat Depth
 - Loin Eye Area
- Soundness
 - Lower Wean-Finish Mortality
- Feed Efficiency
- Reduced Ruptures

...for a highly productive maximum-value market hog.

What Matters to You, Matters to **PureTek**

Generator Performance Data

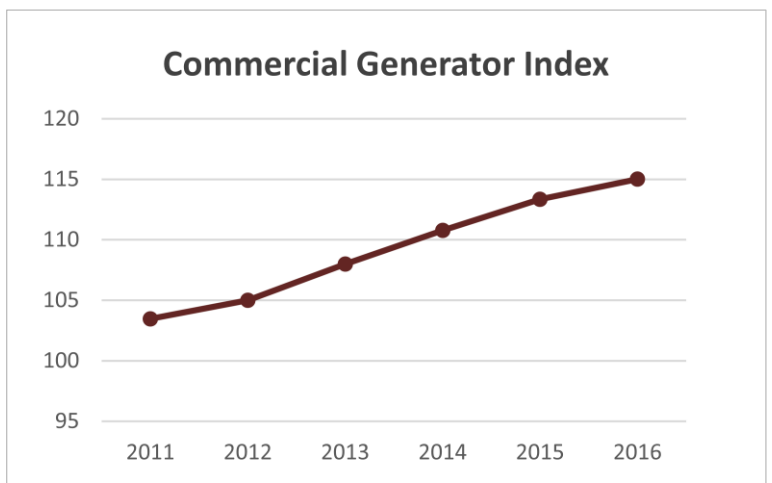
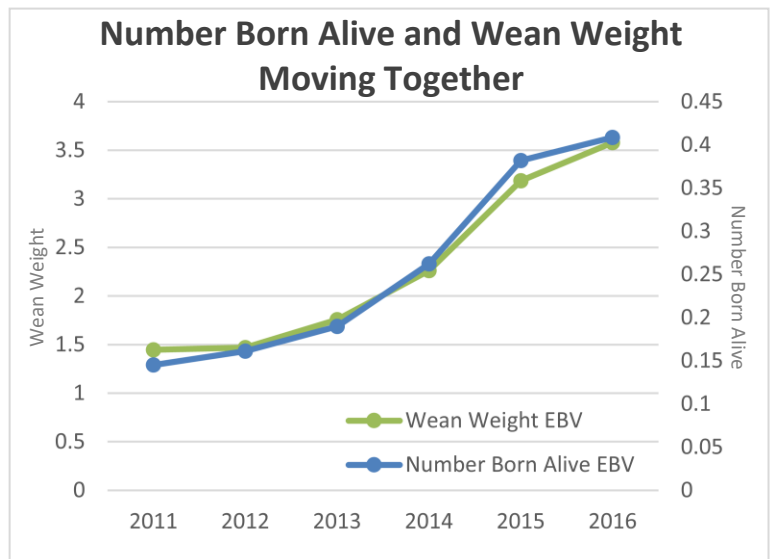


	PureTek Farms	SMS Avg
Farrowing Rate	91.1	85.5
Wean to 1st Service	5.23	6.71
Total Born	13.55	13.77
Live Born	12.42	12.49
Pigs Weaned	10.86	10.7
PW/MF/Y	27.55	25.26

Swine Management Services record 1,175,100 sows 042014

Lact. Length	Litter WW (LBS)	Weaned	Avg. Wean Wt. (LBS)
15	148.3	11.3	13.1
16	149.5	11.3	13.2
17	156.8	11.2	14.0
18	163.3	11.2	14.6
19	164.5	11.2	14.7
20	168.5	11.4	14.8
21	176.0	11.6	15.2

Yoder et al., 2012



What Matters to You, Matters to **PureTek**

10032016