



PureTek D-CLASS

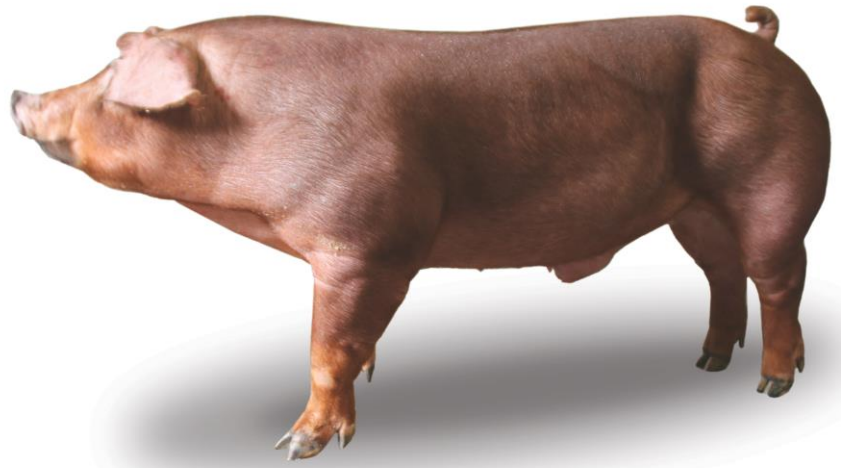
Product Overview

PureTek's Elite Sire Lines produce commercial progeny excelling in efficient lean growth, survivability, consistent performance and maximum-value pigs marketed. The result: Outstanding carcass cutability and impressive pork quality.

By selecting on the Commercial Terminal Sire Index (CTSI), we are continually improving the factors that drive profit for our clients.

PureTek D-CLASS boars are selected on the CTSI for:

- Efficient Lean Growth
 - Growth Rate
 - Backfat Depth
 - Loin Depth
 - Feed Efficiency
- CTSI allows for identification of sires whose progeny excel in a commercial environment
- Purebred evaluation and testing results are also used in the selection process



PureTek D-CLASS Boar

**High Growth
Increased Uniformity
Robustness
Pork Quality**

Individually tested and sibling-tested at both the nucleus level and at the PureTek Commercial Test Herd (CTH)

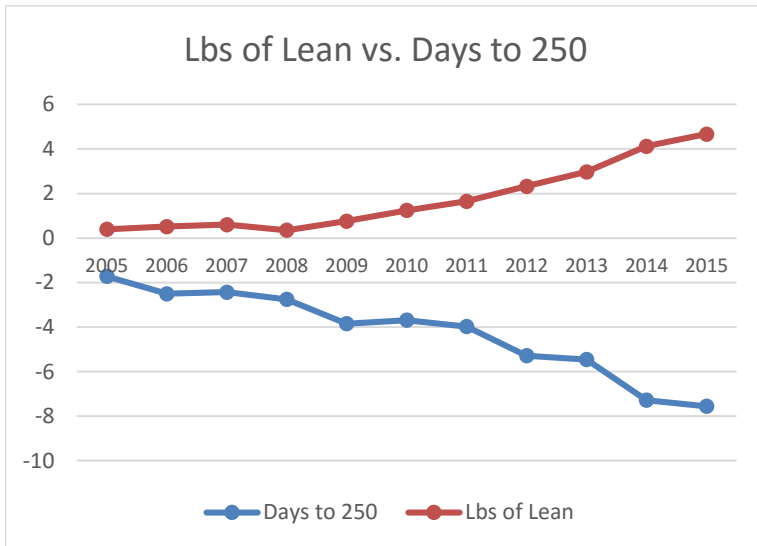
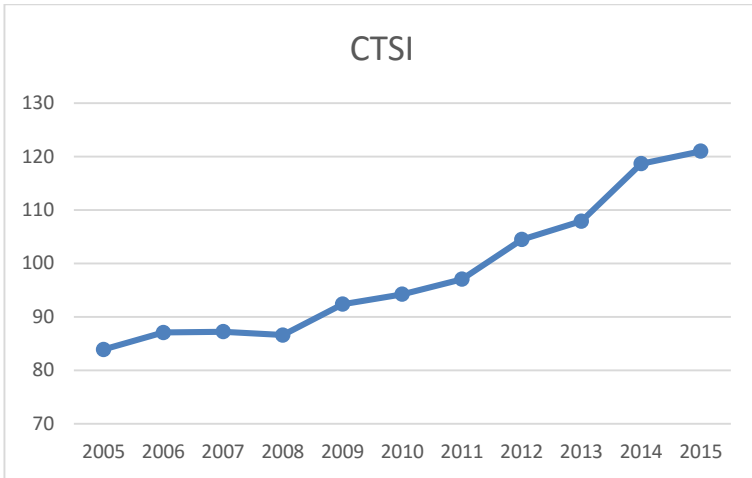
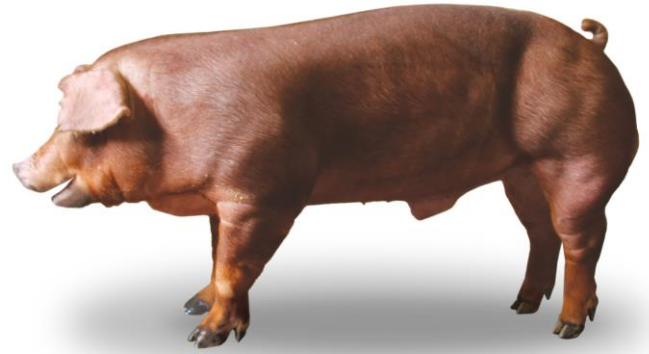
Flexible for AI or natural service



What Matters to You, Matters to **PureTek**

PureTek D-CLASS

Product Overview



Commercial Test Herd D-CLASS Sire Data	
# Head	10,000
% Yield	76.83
% Lean	53
Back Fat	0.84
Loin Depth	2.54
Average Daily Gain	1.51
Start Weight	14.4
End Weight	280.54
Average Days on Feed	164
% Sub.	2.51

*Kill data from Excel Beardstown

D-CLASS-sired Pigs	
Wean-to-Finish Mortality	5.6%
% Full Value Pigs Sold	97.4%
Average Daily Gain	1.6
Wean-to-Finish F/C	2.72
Days on Feed	165

D-CLASS Kill Dta	
% Yield	76.8%
% Lean	55.92%
Back Fat	0.785
Loin Depth	2.54
Weight Sold	279.5

*Kill data from IPC



What Matters to You, Matters to **PureTek**

06012016

www.puretekgenetics.com • sales@puretekgenetics.com • 866-728-7873